

University
of Basel

Department of
Biomedical Engineering

The Department of Biomedical Engineering



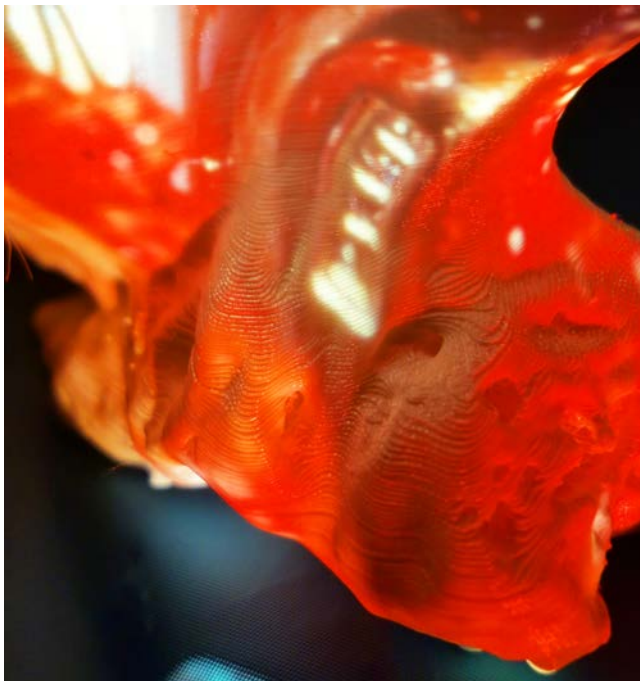
The DBE headquarters in Allschwil (picture: M. Geering)

Patient specific research for science based treatment

The Department of Biomedical Engineering (DBE) bridges the gap between natural sciences and medicine. Our researchers come from a range of different disciplines and countries. They are aiming – in close collaboration with physicians of the University Hospital Basel, the University Children’s Hospital Basel and others – for feasible, problem-based and solution-oriented tools for patient specific research and science based treatment.

The DBE organizes about 130 researchers in four focal areas:

- Biomechanics & Biomaterials
- Medical Lasers & Robotics
- Imaging, Modeling & Diagnosis
- Regenerative Surgery



3D printed hip used for experiments in the Planning & Navigation Team of the Focal Area Imaging, Modelling & Diagnosis (picture: R. Wendler)

The MIRACLE project synergizes excellence from different focal areas in order to develop a minimally invasive robot-assisted and computer-guided laserosteotome. Since 2013 the DBE hosts a PhD program and since 2017 also a Master of Science program that attracts young researchers to the rapidly evolving field of biomedical engineering. Moreover, the department is place of origin for a number of award winning MedTech spin-offs (1).

Department of
Biomedical Engineering
Gewerbstrasse 14
CH–4123 Allschwil
+41 61 207 54 02
news-dbe@unibas.ch
www.dbe.unibas.ch

Founding partners:



Department Head:
Prof. Dr. Philippe Cattin
philippe.cattin@unibas.ch

References:
(1) See our website: www.dbe.unibas.ch/cooperation-innovation/spin-offs/

